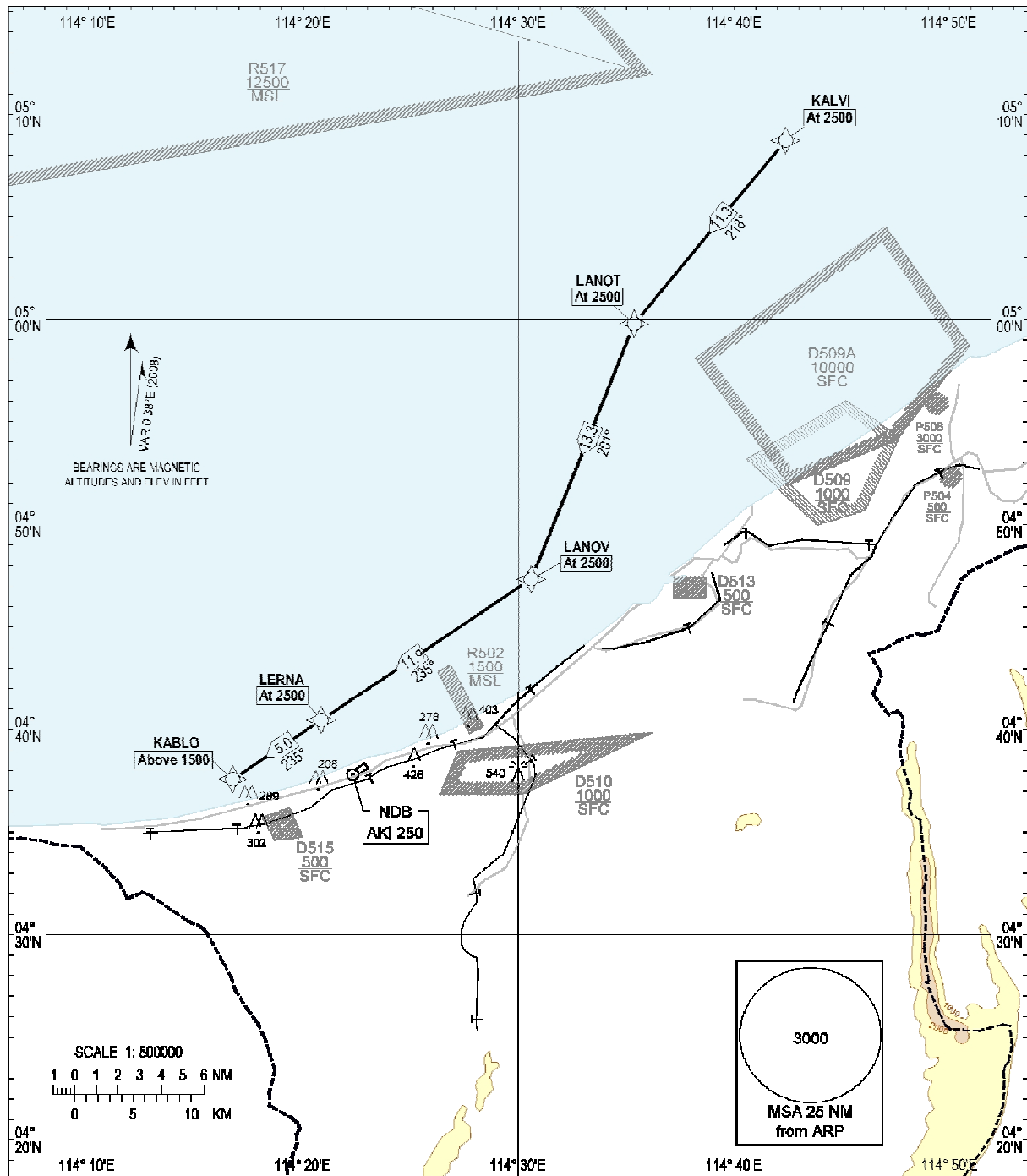


STANDARD ARRIVAL CHART  
INSTRUMENT (STAR)

TRANSITION ALTITUDE  
11000ft

TWR 122.10

ANDUKI  
RNAV (GNSS)  
RWY 05



Notes

1. Critical navdata: Nil.
2. All waypoints are fly-by.
3. All positions are referenced to WGS84 datum.

WAYPOINTS

KALVI	050842.90N	1144223.68E
LANOT	045847.18N	1143521.91E
LANOV	044719.23N	1143034.62E
LERNA	044027.37N	1142049.40E
KABLO	043734.14N	1141643.38E